



DGS 19 - Combination Drill Sharpener



Our most economic
Dual Function Machine for
standard point drill geometries
and a step up to
split point drill grinding
for the most used
118 deg. split point bits.

RIGID ALL METAL DESIGN
EASY TO USE
PRECISE AND STABLE RESULTS

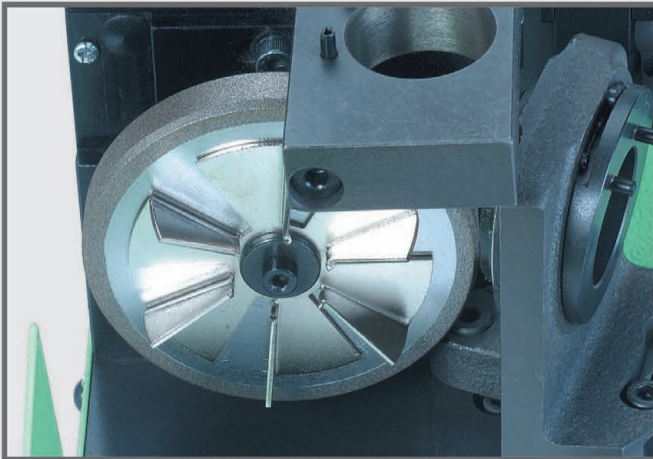
Technical Specifications:		DGS 19 Drill Sharpener	
Drill Point Type		2 Flute Drills with Split Point	2 Flute Drills with Standard Point
Drill Bit Diameter Range		2 to 13 mm (0.080 to 1.0 Inch)	2 to 13 mm (0.080 to 1.0 Inch)
Point Angle Range		118 Degree Fixed	90 to 140 Degree
Web Thinning			S-type
Spindle Speed		5,300 rpm	5,300 rpm
Grinding Wheel Type		Electro Plated CBN #200	Electro Plated CBN #200
Grinding Wheel Size		80 mm (3 1/8 Inch)	80 mm (3 1/8 Inch)
Collet Size		ER 20	ER 20
Power Supply		Single Phase, 120V, 50/60 cycle. (Option: 220V-240V, 50cycle)	
Grinder Size Length x Width x Heights		283 x 145 x 210 mm (11 1/4 x 5 3/4 x 8 1/4 Inch)	
Grinder Weight approximately		12.5 kg (27.5 lbs)	
Standard Accessories (Included)		12 Each ER20 Collets, Size # 2.5, 3, 4, 5, 6, 7, 8, 9, 10, 11, 12, 13 Grinding Chuck, Metal Shim Set for Web Thinning Adjustment, Power Cord 2 Each Allen Wrenches, 3mm and 4mm Size, Operating Manual (English)	
Available Options		Electro Plated Diamond Wheel, SDC # 230 Set of Intermediate Collets: Size # 3.5, 4.5, 5.5, 6.5, 7.5, 8.5, 9.5, 10.5, 11.5, 12.5	



Multi Function Drill Sharpener



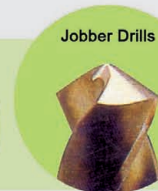
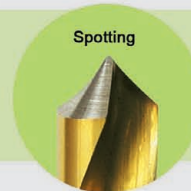
Large, High Quality Electro Plated Grinding Wheels Require no Dressing And Guarantee Stable Results.



1. Standard Grinding Ports on right side.



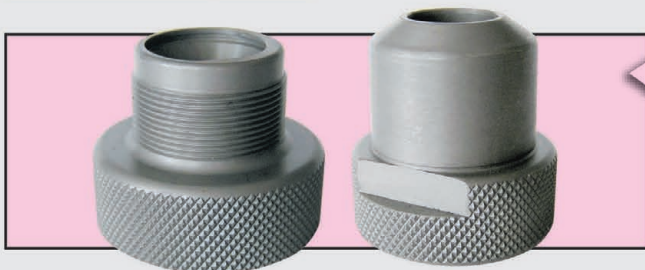
Sharpen Drill Points
from 90 to 140 deg.
Spli-Point with
X-thinning



2. Grinding Ports on left side. (Steps for ES-Point.)



Sharpen Multi-Facet Point
Geometries for standard
118 degree Drills
(Nachi SG-ES Point)



Grinding Chuck
clamps with
tool collets
for precise
tip concentricity

Optional Accessories:



Diamond
Plated
Grinding
Wheels
for
Carbide
Drills



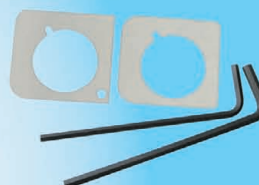
Collet
Sets

Intermediate collet
sizes, or special
collet set to improve
concentric clamping, e.g.
for high speed drill use.

3. Standard Supplied Accessories:



Tool Collet Set
for drill range
specified.
Precise centering
of the drill bits
for grinding.



Shim set for
web thinning.
Allen Wrenches,
2 each.



SharperDrills™ Ltd.

9674 Colerain Ave, Suite 221

Cincinnati, Ohio 45251

Phone: +1(513)328-5041

www.sharperdrills.com